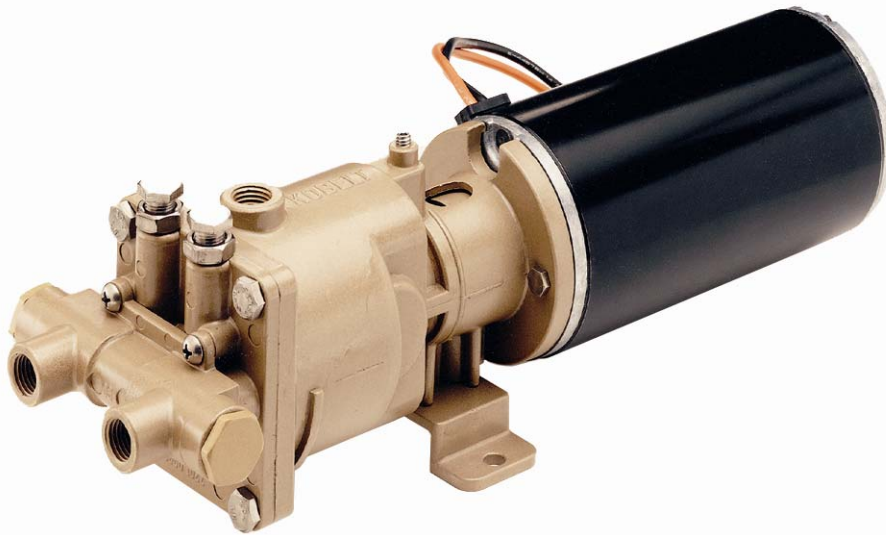
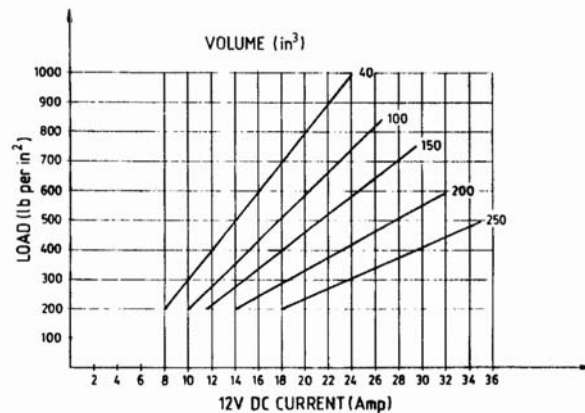


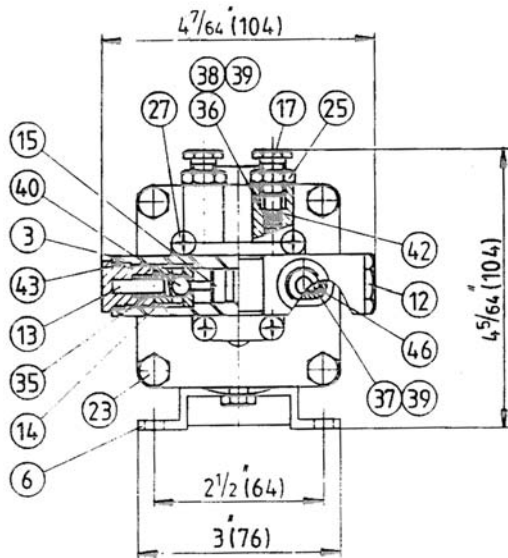
Model 7201 Autopilot Hydraulic Pump



In a manual hydraulic steering system, a source of hydraulic pressure is required to make the autopilot operational. The 7201 is specifically designed for this purpose. It is available with either 12 or 24 volt DC motors and is intended for intermittent use only. The pump itself could be used on a continuous basis. But the motor would overheat if the pump is set on a high volume and a relatively high pressure. The maximum amperage that the motor can handle on an intermittent basis is approximately 30 amps for a 12 volt motor and 15 amps for a 24 volt motor. We do, however, recommend that the motor should not draw any more than 16 amps for the 12 volt motor and 8 amps for the 24 volt motor. The table indicates the capabilities of the motor to produce one gallon per minute at up to 2,000 psi on a relatively continuous basis. Adjustable safety valves for both port and starboard are provided and also flow control screws provide adjustment for the variable delivery from 40 to 250 cubic inches per minute. The lock valve fitted on the pump is to prevent hydraulic feedback from the steering system. Both pump and motor are equipped with ball bearings. The pump is made of silicon bronze, stainless steel hardware and hardened steel pistons and wear plate.



Dimensions and Parts



ITEM	QTY	PART NUMBER	DESCRIPTION
1	1	7201-0001	Pump Housing
2	1	7201-0002	End Cap
3	1	7201-0003	Lock Valve Body
4	1	7201-0004	Thrust Bearing Retainer
5	1	7201-0005	Rotor
6	1	7201-0006	Foot
7	2	7201-0007	Half Coupling
8	1	7201-0008	Retainer
9	1	7201-0009	Shaft
10	1	7201-0010	Suction Plate
11	5	7201-0011	Piston
12	2	7003-0025	End Cap
13	2	7003-0024	Pin
14	2	7003-0031	Ball Seat
15	1	7201-0015	Shuttle
16	1	7201-0016	Volume Adjusting Screw
17	2	7201-0017	Pressure Relief Valve
18	4	7201-0018	Drive Plug
19	1	7201-51104	Thrust Bearing Retainer
20	1	7201-6000	Ball Bearing
21	1	7201-6962	Ball Bearing
22	1	7201-12MT	Electric Motor 12VDC
22	1	7201-24MT	Electric Motor 24VDC
23	6	1001-1008	Hex. Bolt
24	2	1001-0810	Hex. Bolt
25	2	1022-0262	Hex. Jam Nut
26	2	1023-0308	Lock Washer #10
27	4	1010-0806	Rd. Hd. Philip Screw
28	5	1012-0606	Rd. Hd. Philip Screw
29	2	1002-0832	Hex. Socket Hd. Cap Screw
30	1	1016-0808	Hex. Socket Set Screw
31	1	1016-1004	Hex. Socket Set Screw
32	1	1024-0810	Spring Pin
33	2	1201-0180	Spring - Retainer
34	5	1201-0184	Spring - Piston
35	2	1201-0171	Spring
36	2	1201-0182	Spring - Pressure Relief
37	2	1201-0183	Spring - Suction
38	2	1033-0204	Rd. Hd. Rivet
39	4	1301-0107	Ball
40	2	1301-0110	Ball
41	1	7201-3680	Seal
42	3	1101-0006	O-Ring
43	3	1101-0015	O-Ring
44	5	1101-0012	O-Ring
45	1	1101-0039	O-Ring
46	2	1101-0017	O-Ring

