

Model 6509 Integrated Electronic Control Head



The compact design of this control head allows it to be fitted into small spaces. The upper portion is of a water tight construction and can, therefore, be installed anywhere on board ship. It is made entirely in bronze and stainless steel and carries a five year warranty.

The 6509 control head is also available in a single engine configuration. Non-illuminated side decals can be attached to the control head for fixed propulsion applications.

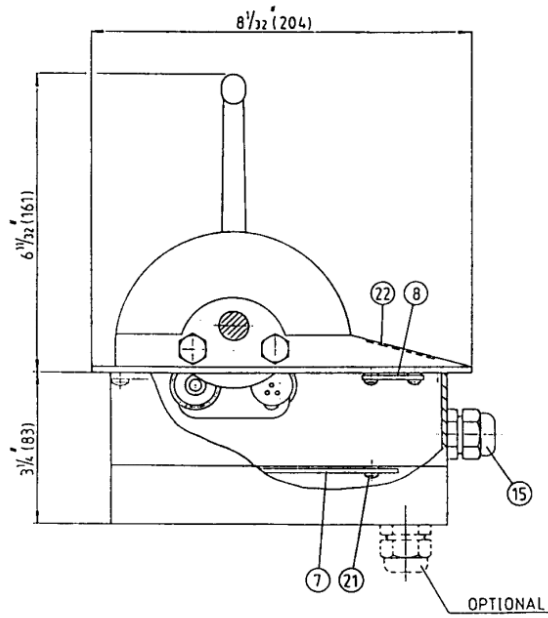
Features

The membrane key pad has four standard switches and provides:

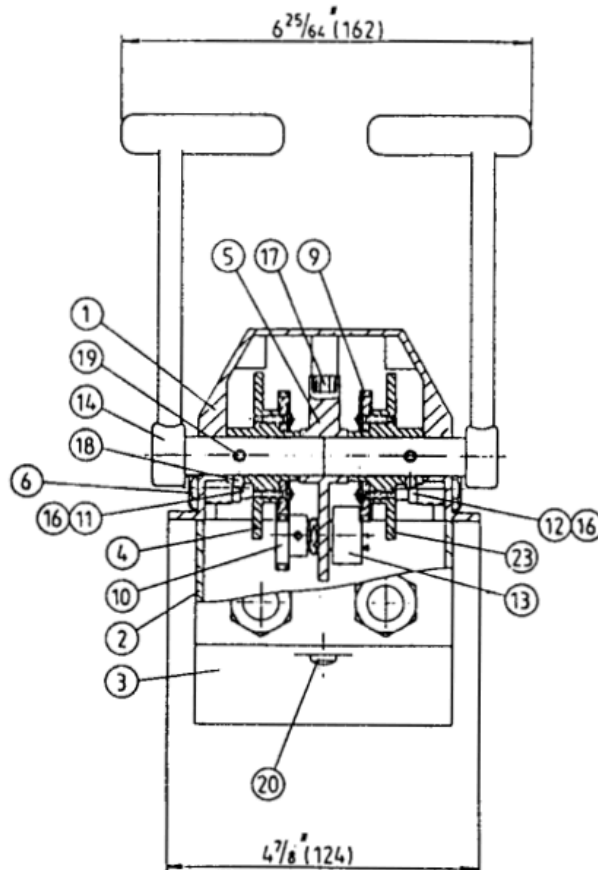
- Station select.
- Station lock.
- Overriding throttle.
- Engine synchronization.

Dimensions and Parts

Side View



Front View



Model 6509 Integrated Electronic Control Head

ALL DIMENSIONS IN INCHES (MM)

ITEM	QUANTITY	PART NUMBER	DESCRIPTION
1	1	6509-0001	Dome
2	1	6509-0002	Spacer
3	1	6509-0003	Cover
4	2	6509-0004	Cam (right)
5	1	6509-0006	Pot Braker
6	4	6509-0007	Friction Detent Nut
7	1	6541-0001	Circuit Board
8	1	6509-0009	Circuit Board
9	2	6509-0010	Spur Gear
10	2	6509-0011	Pinion
11	2	2012-0007	Detent
12	2	2542-0008	Friction
13	2	6639-S	Potentiometer 5K
14	2	6509-0014	Handle
15	2	6001-0249	Connection Gland
16	2*	1201-0062	Spring
17	2	1002-1010	Hex. Socket Hd. Cap Screw
18	2	1016-0804	Hex. Socket Set Screw
19	2	1025-0816	Spring Pin
20	6	1010-0804	Round Hd. Philip M. Screw
21	12	1012-0606	Pan Hd. Philip M. Screw
22	1*	6509-0005	Switch Pad
23	1	6509-0004A	Cam (left)

* Quantity may vary.

6509 "Cut-Out" Dimensions

